

**DMP-110**  
**32MB MP3 Player/Recorder**

User's Manual

Rev. 01 (Sep. 2000)

## FCC Certifications

This equipment has been tested and found to comply with the limits for a Class B digital device, pursuant to Part 15 of the FCC Rules. These limits are designed to provide reasonable protection against harmful interference in a residential installation. This equipment generates, uses and can radiate radio frequency energy and, if not installed and used in accordance with the instructions, may cause harmful interference to radio communications. However, there is no guarantee that interference will not occur in a particular installation. If this equipment does cause harmful interference to radio or television reception, which can be determined by turning the equipment off and on, the user is encouraged to try to correct the interference by one or more of the following measures:

- Reorient or relocate the receiving antenna.
- Increase the separation between the equipment and receiver.
- Connect the equipment into an outlet on a circuit different from that to which the receiver is connected.
- Consult the dealer or an experienced radio/TV technician for help.

Shielded interface cables must be used in order to comply with emission limits. You are cautioned that changes or modifications not expressly approved by the party responsible for compliance could void your authority to operate the equipment.

This device complies with Part 15 of the FCC rules. Operation is subject to the following two conditions: (1) This device may not cause harmful interference, and (2) This device must accept any interference received, including interference that may cause undesired operation.

## CE Mark Warning

This is a Class B product. In a domestic environment, this product may cause radio interference, in which case the user may be required to take adequate measures.

## VCCI Warning

注意

この装置は、情報処理装置等電波障害自主規制協議会(VCCI)の基準に基づく第一種情報技術装置です。この装置を家庭環境で使用すると電波妨害を引き起こすことがあります。この場合には使用者が適切な対策を講ずるよう要求されることがあります。

## LIMITED WARRANTY

D-Link Systems, Inc. (“D-Link”) provides this limited warranty for its product only to the person or entity who originally purchased the product from D-Link or its authorized reseller or distributor.

**Limited Hardware Warranty:** D-Link warrants that the hardware portion of the D-Link products described below (“Hardware”) will be free from material defects in workmanship and materials from the date of original retail purchase of the Hardware, for the period set forth below applicable to the product type (“Warranty Period”) if the Hardware is used and serviced in accordance with applicable documentation; provided that a completed Registration Card is returned to an Authorized D-Link Service Office within ninety (90) days after the date of original retail purchase of the Hardware. If a completed Registration Card is not received by an authorized D-Link Service Office within such ninety (90) period, then the Warranty Period shall be ninety (90) days from the date of purchase.

<i>Product Type</i>	<i>Warranty Period</i>
Product (excluding power supplies and fans), if purchased and delivered in the fifty (50) United States, or the District of Columbia (“USA”)	As long as the original purchaser still owns the product
Product purchased or delivered outside the USA	One (1) Year
Power Supplies and Fans	One (1) Year
Spare parts and spare kits	Ninety (90) days

D-Link’s sole obligation shall be to repair or replace the defective Hardware at no charge to the original owner. Such repair or replacement will be rendered by D-Link at an Authorized D-Link Service Office. The replacement Hardware need not be new or of an identical make, model or part; D-Link may in its discretion may replace the defective Hardware (or any part thereof) with any reconditioned product that D-Link reasonably determines is substantially equivalent (or superior) in all material respects to the defective Hardware. The Warranty Period shall extend for an additional ninety (90) days after any repaired or replaced Hardware is delivered. If a material defect is incapable of correction, or if D-Link determines in its sole discretion that it is not practical to repair or replace the defective Hardware, the price paid by the original purchaser for the defective Hardware will be refunded by D-Link upon return to D-Link of the defective Hardware. All Hardware (or part thereof) that is replaced by D-Link, or for which the purchase price is refunded, shall become the property of D-Link upon replacement or refund.

**Limited Software Warranty:** D-Link warrants that the software portion of the product (“Software”) will substantially conform to D-Link’s then current functional specifications for the Software, as set forth in the applicable documentation, from the date of original delivery of the Software for a period of ninety (90) days (“Warranty Period”), if the Software is properly installed on approved hardware and operated as contemplated in its documentation. D-Link further warrants that, during the Warranty Period, the magnetic

media on which D-Link delivers the Software will be free of physical defects. D-Link's sole obligation shall be to replace the non-conforming Software (or defective media) with software that substantially conforms to D-Link's functional specifications for the Software. Except as otherwise agreed by D-Link in writing, the replacement Software is provided only to the original licensee, and is subject to the terms and conditions of the license granted by D-Link for the Software. The Warranty Period shall extend for an additional ninety (90) days after any replacement Software is delivered. If a material non-conformance is incapable of correction, or if D-Link determines in its sole discretion that it is not practical to replace the non-conforming Software, the price paid by the original licensee for the non-conforming Software will be refunded by D-Link; provided that the non-conforming Software (and all copies thereof) is first returned to D-Link. The license granted respecting any Software for which a refund is given automatically terminates.

***What You Must Do For Warranty Service:***

**Registration Card.** The Registration Card provided at the back of this manual must be completed and returned to an Authorized D-Link Service Office for each D-Link product within ninety (90) days after the product is purchased and/or licensed. The addresses/telephone/fax list of the nearest Authorized D-Link Service Office is provided in the back of this manual. FAILURE TO PROPERLY COMPLETE AND TIMELY RETURN THE REGISTRATION CARD MAY AFFECT THE WARRANTY FOR THIS PRODUCT.

**Submitting A Claim.** Any claim under this limited warranty must be submitted in writing before the end of the Warranty Period to an Authorized D-Link Service Office. The claim must include a written description of the Hardware defect or Software nonconformance in sufficient detail to allow DLink to confirm the same. The original product owner must obtain a Return Material Authorization (RMA) number from the Authorized D-Link Service Office and, if requested, provide written proof of purchase of the product (such as a copy of the dated purchase invoice for the product) before the warranty service is provided. After an RMA number is issued, the defective product must be packaged securely in the original or other suitable shipping package to ensure that it will not be damaged in transit, and the RMA number must be prominently marked on the outside of the package. The packaged product shall be insured and shipped to DLink, 53 Discovery Drive, Irvine CA 92618, with all shipping costs prepaid. D-Link may reject or return any product that is not packaged and shipped in strict compliance with the foregoing requirements, or for which an RMA number is not visible from the outside of the package. The product owner agrees to pay D-Link's reasonable handling and return shipping charges for any product that is not packaged and shipped in accordance with the foregoing requirements, or that is determined by D-Link not to be defective or non-conforming.

***What Is Not Covered:***

This limited warranty provided by D-Link does not cover:

Products that have been subjected to abuse, accident, alteration, modification, tampering, negligence, misuse, faulty installation, lack of reasonable care, repair or service in any way that is not contemplated in the documentation for the product, or if the model or serial number has been altered, tampered with, defaced or removed;

Initial installation, installation and removal of the product for repair, and shipping costs;

Operational adjustments covered in the operating manual for the product, and normal maintenance;

Damage that occurs in shipment, due to act of God, failures due to power surge, and cosmetic damage; and

Any hardware, software, firmware or other products or services provided by anyone other than D-Link.

***Disclaimer of Other Warranties:*** EXCEPT FOR THE LIMITED WARRANTY SPECIFIED HEREIN, THE PRODUCT IS PROVIDED “AS-IS” WITHOUT ANY WARRANTY OF ANY KIND INCLUDING, WITHOUT LIMITATION, ANY WARRANTY OF MERCHANTABILITY, FITNESS FOR A PARTICULAR PURPOSE AND NON-INFRINGEMENT. IF ANY IMPLIED WARRANTY CANNOT BE DISCLAIMED IN ANY TERRITORY WHERE A PRODUCT IS SOLD, THE DURATION OF SUCH IMPLIED WARRANTY SHALL BE LIMITED TO NINETY (90) DAYS. EXCEPT AS EXPRESSLY COVERED UNDER THE LIMITED WARRANTY PROVIDED HEREIN, THE ENTIRE RISK AS TO THE QUALITY, SELECTION AND PERFORMANCE OF THE PRODUCT IS WITH THE PURCHASER OF THE PRODUCT.

***Limitation of Liability:*** TO THE MAXIMUM EXTENT PERMITTED BY LAW, D-LINK IS NOT LIABLE UNDER ANY CONTRACT, NEGLIGENCE, STRICT LIABILITY OR OTHER LEGAL OR EQUITABLE THEORY FOR ANY LOSS OF USE OF THE PRODUCT, INCONVENIENCE OR DAMAGES OF ANY CHARACTER, WHETHER DIRECT, SPECIAL, INCIDENTAL OR CONSEQUENTIAL (INCLUDING, BUT NOT LIMITED TO, DAMAGES FOR LOSS OF GOODWILL, WORK STOPPAGE, COMPUTER FAILURE OR MALFUNCTION, LOSS OF INFORMATION OR DATA CONTAINED IN, STORED ON, OR INTEGRATED WITH ANY PRODUCT RETURNED TO D-LINK FOR WARRANTY SERVICE) RESULTING FROM THE USE OF THE PRODUCT, RELATING TO WARRANTY SERVICE, OR ARISING OUT OF ANY BREACH OF THIS LIMITED WARRANTY, EVEN IF D-LINK HAS BEEN ADVISED OF THE POSSIBILITY OF SUCH DAMAGES. THE SOLE REMEDY FOR A BREACH OF THE FOREGOING LIMITED WARRANTY IS REPAIR, REPLACEMENT OR REFUND OF THE DEFECTIVE OR NON-CONFORMING PRODUCT.

***GOVERNING LAW:*** This Limited Warranty shall be governed by the laws of the state of California.

Some states do not allow exclusion or limitation of incidental or consequential damages, or limitations on how long an implied warranty lasts, so the foregoing limitations and exclusions may not apply. This limited warranty provides specific legal rights and the product owner may also have other rights which vary from state to state.

# Table of Contents

<b>DMP-110</b> .....	<b>1</b>
FILE SPECIFICATION .....	1
PACKAGE CONTENTS.....	1
DMP-110 DIAGRAM.....	2
SYSTEM REQUIREMENTS .....	3
CONNECTING TO PC .....	3
<i>Caution:</i> .....	3
MP3 MANAGER INSTALLATION AND USE.....	3
<i>Installing MP3 Manager</i> .....	4
<i>Installing Drivers</i> .....	7
<i>Using MP3 Manager</i> .....	10
<i>MP3 File Management</i> .....	11
? Download MP3 Files .....	11
? Delete MP3 Files .....	11
? MP3 Files Index.....	12
<i>Managing Voice Files</i> .....	12
? Download DVR Files .....	12
? Uploading DVR Files .....	12
? Deleting DVR Files .....	12
? DVR File Index.....	13
<i>Others</i> .....	13
? Initialize Internal Memory .....	13
? Initialize External Memory .....	13
• About .....	13
? Info.....	13
<i>LCD Display Overview</i> .....	14
<i>Voice Recording</i> .....	15
<i>Voice File Playback Procedure</i> .....	15
<i>Delete Voice files:</i> .....	15
TROUBLESHOOTING.....	16
<i>Memory</i> .....	17
Internal Memory.....	17
External Memory.....	17
TECHNICAL SUPPORT.....	18
<b>SPECIFICATIONS</b> .....	<b>19</b>

## DMP-110

Thank you for purchasing the D-Link DMP-110 MP-3 Player. The DMP-110 is designed to bring you the latest technology and high quality sound. Please follow this User Manual to install and enjoy your favorite music with the DMP-110.

MP3 is short for MPEG-1 audio, layer 3. MP3 is a format that allows you to compress and store music files on your computer. Most people cannot hear the difference between MP3 and Audio-CD music. This is because MP3 removes certain frequencies during the compression process. The human ear is less sensitive to the frequencies that have been removed. Resulting files are small in size (about 1/10~1/12 of original size ), yet retain high quality. Typically a 1 MB MP3 file will represent one minute of music or several minutes of Digital Voice Recording. These high-quality, small files enable efficient storage of music on a hard drive, reasonable file download times via the Internet, and portability of files on hardware devices. The compression bit rate and other variables can also affect the quality of an MP3 file. To obtain good quality MP3 files, close all the resident files and software before encoding.

The Digital Voice Recording (DVR) feature enables roughly 4 minutes of voice data storage per MB at 8Khz sampling rate which is then played back at a rate of 32Kbps.

### File Specification

Items	MP3 File	Voice File
File Format	Filename.MP3	xx._DR(xx:0-99)
Max. Tracks	99*	99*
Sampling Rate	32/44.1/48 KHz	8KHz
Bit Rate(Kbps)	Support all MPEG 1 bit rates	32

\* Please note: The DMP-110 can access a maximum combination of 128 tracks of MP3 and Voice files. The DMP-110 can access a maximum of 99 tracks of MP3 or Voice files when only one format is stored in memory.

### Package Contents

The DMP-110 package includes all of the contents shown below:

- DMP-110
- Earphone
- Installation Software CD
- User's Manual
- USB Cable
- 2 AAA-Size Batteries

## DMP-110 Diagram

The diagram below shows the controls and some of the features of the DMP-110, see Figure 1.

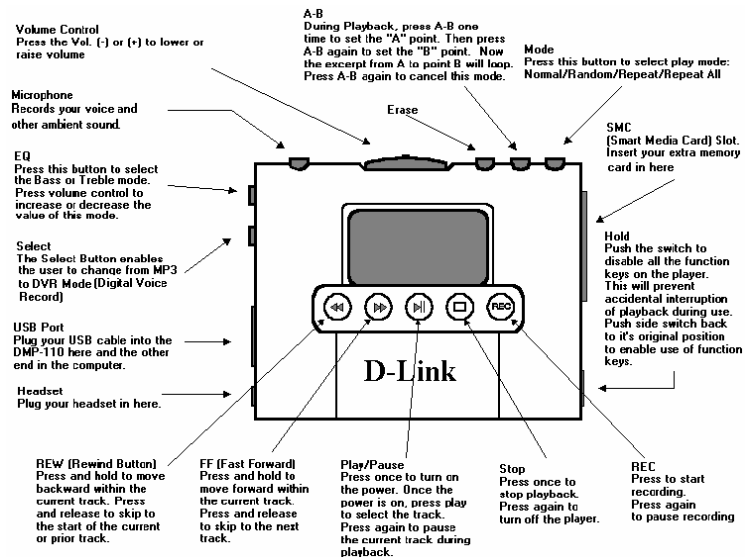


Figure 1: Diagram of the DMP-110



## **System Requirements**

Your computer must meet the following requirements in order to use the DMP-110:

- Pentium 90MHz or faster
- 40MB hard disk space
- 16MB RAM or higher
- Windows 98 or higher
- CD-ROM drive
- 1 available USB port (USB Ver. 1.x)

## **Connecting to PC**

To download MP3 files from PC to DMP-110, the DMP-110 must be connected to the PC's USB port.

1. Turn on the DMP-110 and plug the provided USB cable into the data port of the DMP-110.
2. Connect the USB cable provided to the USB port of your PC.
3. Power the DMP-110 off by disconnecting it from your PC.

## **Caution:**

- Always power on your DMP-110 before connecting the USB cable.
- Please do not remove the SmartMedia Card when the DMP-110 is running.
- Do not remove the USB cable during download. If USB cable is removed during download, MP3 files may be deleted or corrupted.

## **MP3 Manager Installation and Use**

The Installation CD includes:

- MP3 Manager to download MP3 files from your PC to the Player.
- MusicMatch or Xing AudioCatalyst software to create and play MP3 files on your PC.

- MP3 Music Web Sites where MP3 songs, technologies, and resources can be obtained.

## Installing MP3 Manager

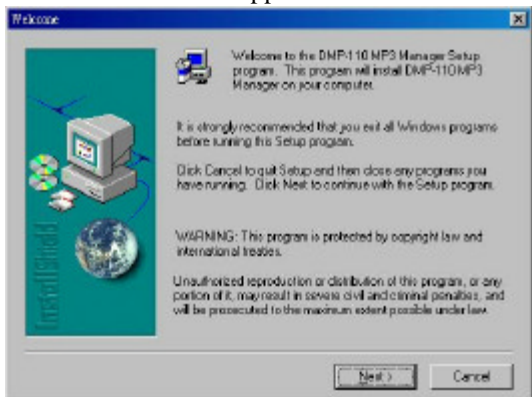
Follow these steps to install the MP3 Manager for the DMP-110:

1. Insert the MP3 Manager installation CD into your CD-ROM drive. The Auto Play feature will start the disc automatically. Click “D-Link DMP-110 MP3 Manager” to install the MP3 Manager.

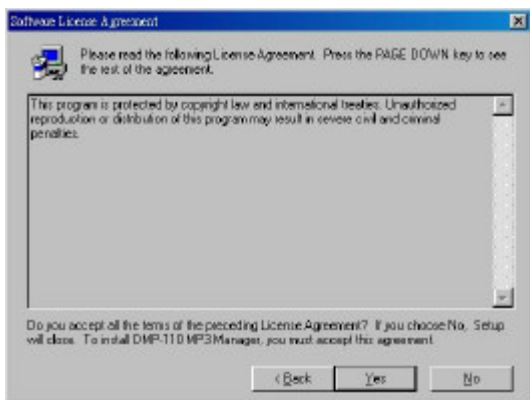


Click “D-Link DMP-110 MP3 Manager” to install MP3 Manager.

2. The Welcome screen appears.

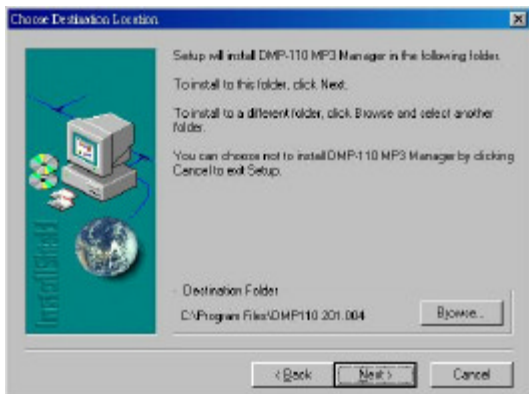


### Click Next



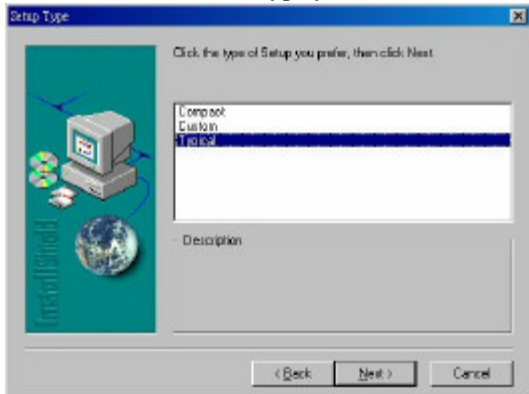
### Click Yes

3. Please select the directory which you wish to install the program. Click Next to accept the default destination folder or click Browse to select another folder. The D-Link recommends using the default directory.



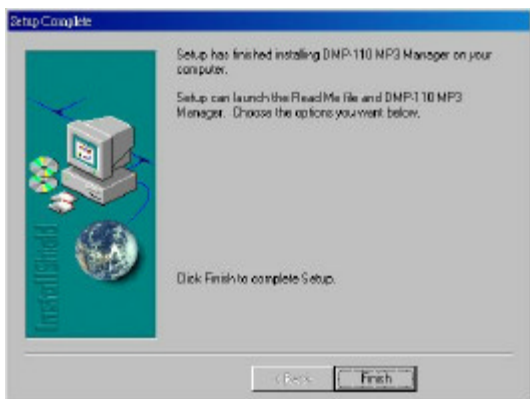
### Click Next

4. Choose which software type you want to install.



### Select the type and click Next.

5. When all the installation procedure is completed, click on the Finish button to exit the setup program.



**Click Finish**

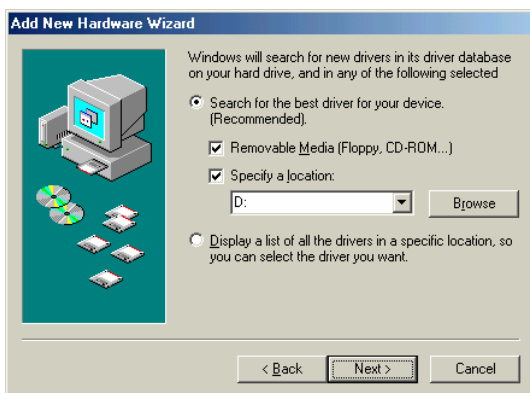
## Installing Drivers

1. Verify that “Specify the location of the driver (Advanced)” is checked.



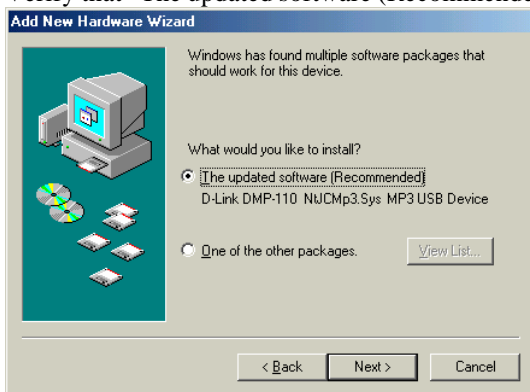
**Click Next**

2. Click “Search for the best driver for your device (Recommended)” and verify that “Removable Media” and “Specify a location” are checked.



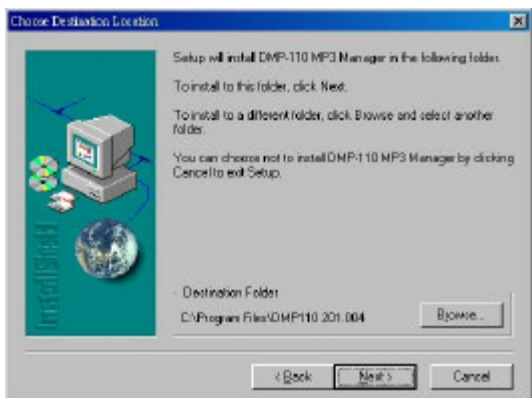
**Browse to the location of the CD ROM if necessary and click Next**

3. Verify that “The updated software (Recommended)” is checked.



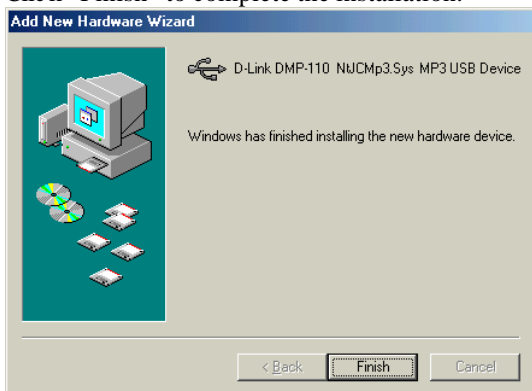
**Click Next to continue**

4. Click Next to accept the default destination folder or click Browse to select another folder.



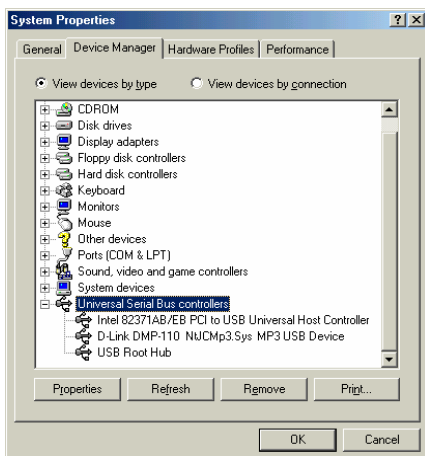
### Click Next

5. Click “Finish” to complete the installation.



### Click Finish to complete the installation

6. Click Start > Settings > Control Panel > System > Device Manager tab > click on the plus (+) sign to the left of Universal Serial Bus controllers to verify that the drivers have been installed correctly.



**Click OK**

## Using MP3 Manager

Launch the MP3 Manager by choosing the MP3 Manager icon from the desktop, Start menu or in the Program Manager. Then MP3 Manager Main Screen appears as Figure 2.

\* Please note: You must power on the DMP-110 and then connect to the PC before launching the MP3 Manager program.






Figure 2: DMP-110 MP3 Manager Main Screen

## MP3 File Management

### • Download MP3 Files

Follow these steps to download your MP3 Files from PC to the DMP-110:

1. From Main Screen, please select the "MP3" tab and the memory of the DMP-110.
2. Browse to the folder that you want to store the MP3 files in. Select the target files from the right window on the Main Screen.
3. Please click  icon to download files to the DMP-110.
4. The progress window appears. Once the file exists on the DMP-110, please rename the file to continue downloading or exit to cancel.





### • Delete MP3 Files

Follow these steps to delete MP3 files:

1. Select files to be deleted.
2. Please click  icon to erase files.

- **MP3 Files Index**


Follow these steps to use the MP3 index.

1. Click  or  to move file up one track in the list.
2. Select the desired file from the window.
3. Click  or  to move file down one track.
4. All files are re-indexed.

## **Managing Voice Files**


- **Download DVR Files**

Follow these steps to download DVR files from PC to the DMP-110:

1. From Main Screen, please select the "DVR" tab and the memory of the DMP-110.
2. Search for and select the target folder. Select the target files from the right window on Main Screen.
3. Please click  icon to download files to the DMP-110.
4. The progress window appears.

- **Uploading DVR Files**

Follow these steps to save DVR files to PC:

1. Select the desired files from the Player.
2. Please click  icon to upload files to your PC.



- **Deleting DVR Files**

Follow these steps to delete DVR files:

1. Select files to be deleted.
2. Please click  icon to erase files.


- **DVR File Index**

Follow these steps to use the DVR File Index:

1. Select desired files from the DMP-110.
2. Click  or  to move up or down to the next track. All files will be re-indexed.


## Others

- **Initialize Internal Memory**

Click  icon to re-format the internal memory.


Please Note: This will remove all the files from internal memory.

- **Initialize External Memory**


Click  icon to re-format the external memory.

\*Please Note: This will remove all the files from external memory.

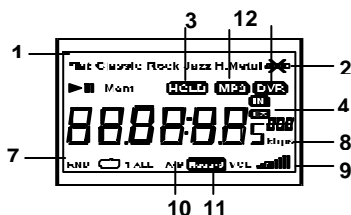
- **About**

Click the  icon to show you the copyright and version of this manager. Click OK to close this window and return to the MP3 Manager main screen.

- **Info**

Click the  icon to show you the product, manufacturer information and memory status. Check here to make sure that you have available memory before downloading files. Click OK to close this window and return to the MP3 Manager Main Screen

## LCD Display Overview



1. EQ Mode: Indicates Equalizer modes: Flat, Classic, Rock, Jazz and H.Metal.
2. Battery Status: Flashes when the capacity of batteries is low.
3. Hold: Indicates when the Hold switch is enabled.
4. IN / EX Mode: Indicates whether internal memory or external SmartMedia Card is selected.
5. Play / Pause: Play arrow or vertical Pause displays depending on mode.
6. Displays the current information; file's track number, playback time...etc.
7. Mode: Indicates play mode: Repeat/Repeat all/Random/ Repeat All.
8. Shows the current MP3 file's encoded bit-rate (kbps: kilo bits per second).
9. Vol.: Indicates volume level.
10. A-B: Indicates if A-B select is selected.
11. Record: Will flash indicating download is in progress.
12. MP3/DVR: Indicates the player is in MP3 or DVR mode.

## **Voice Recording**

Follow these steps to record Voice:

1. Make sure the LCD display shows Stop. Press Select button to enter the DVR mode. The default memory is internal (In). Or press the Select button again to use the external SmartMedia Card.
2. Press Rec button until the LCD displays Record. The DMP-110 starts to record.
3. During recording, you may press Rec again to pause recording, or again to continue recording on the same track.
4. Press the stop button to stop recording.

The DMP-110 will automatically generate a new track if one voice file extends into internal and external flash memory. This will create two separate tracks for the one voice file.

The LCD will display Mem FULL (Memory full) and stop recording once the DMP-110 detects no free memory.

## **Voice File Playback Procedure**

Follow these steps to playback Voice files:

1. Set the Player to DVR mode by pressing the Select button.
2. Press the Play button to playback the selected voice file.
3. During playback, you may press the play button again to pause the DMP-110. Press the play button again to release the pause function.
4. To stop the playback, please press the Stop button.

In DVR mode, the EQ button will not function.

## **Delete Voice files:**

Follow these steps to delete Voice files:

1. Set the DMP-110 to DVR mode by pressing Select button.

2. Press the FF or REW button to select the file.
3. Press the Erase button twice to delete the voice file.
4. The playback sequence of voice files will be re-index after the file is erased.

The DMP-110 is able to delete a voice file during playback. The file length must be at least 5 seconds.

## **Troubleshooting**

### **DMP-110 cannot play back files:**

The files may be corrupted. You must initialize internal memory. You can initialize memory by doing the following procedure:

1. Make sure that the power is OFF.
2. Press and hold the EQ and ERASE buttons then press and hold PLAY button at the same time, after 5 seconds the display showing INIT that means memory has been initialized.
3. You should be now able to transfer and play MP3 files or record and play voice files.

### **Unable to download MP3 files or connect to the PC.**

- Please check the condition of the batteries first.
- If this doesn't work, re-attach the USB cable and reboot the computer.

### **The DMP-110 does not work or the LCD display is blank.**

- Check the batteries.
- Check the polarity (+,-) of the batteries.

### **The buttons are not functioning.**

- Check if the Hold switch is down.
- While the Hold switch is down, the buttons will not work.

### **No sound when the play button is pressed.**

- Check if the earphones are attached.

- Verify that MP3 files have been stored in the internal flash memory or the external SmartMedia Card.

**The file on the SmartMedia Card is not being recognized.**

- Files stored on a SmartMedia card by an MP3 player other than DMP-110 cannot be used because the data format is incompatible. (Using MP3 Manager, you can initialize the SmartMedia Card and copy the file(s) again.)

**DMP-110 powers OFF due to high static electricity.**

- This may occur in very dry climates when first making contact with the DMP-110. The DMP-110 is designed to shut down in this situation to protect itself. To reset the DMP-110, press PLAY to turn the DMP-110 back on and continue to use.

## **Memory**

### **Internal Memory**

If you are not able to download MP3 files into internal memory, please check that the memory is valid and recognized by the DMP-110.

The "Total Size" listed in the "Info" window should be 32M or equal to the amount of memory you have loaded in the DMP-110.

### **External Memory**

If you are not able to download MP3 files into external memory, verify that you are using a SmartMedia Card (SMC) which is 3.3V and SmartMedia compliant. The DMP-110 is compatible with the following SmartMedia Cards:

- Samsung 16MB/3.3V
- Samsung 32MB/3.3V
- Samsung 64MB/3.3V
- Kingston 16MB/3.3V
- Kingston 32MB/3.3V
- Kingston 64MB/3.3V

If you are uncertain, you may format internal memory (INT)and/or external memory (EXT) in the MP3 Manager.

After formatting memory, you can download MP3 files to the DMP-110. Please remove batteries from the DMP-110 when not using for a long period in order to avoid any potential damage due to battery leakage.

## **Technical Support**

D-Link welcomes all technical support inquiries about our products. However, D-Link manufactures products for the world market, and not every country carries every D-Link product. This form is for contacting technical support serving the United States. We may be unable to answer questions about products which are not carried in the United States. If you are a D-Link customer outside the United States and Canada, please visit D-Link "[International Offices](#)" to receive in-country technical support services.

D-Link Technical Support hours are 6 a.m to 6 p.m. (PST). We can be reached by telephone at 949-788-0805, by e-mail at [ustech@dlink.com](mailto:ustech@dlink.com), or with the form below.

If your product was purchased through D-Link Shop ([www.d-linkshop.com](http://www.d-linkshop.com)) within 30 days or less, please visit D-Link Shop at [http://www.d-linkshop.com/store.cfm? a=cust](http://www.d-linkshop.com/store.cfm?a=cust). At D-Link Shop, any questions you have regarding returns, shipping, or billing, will be answered.

If you have had the product for more than 30 days, please fill-in the form below with any technical or warranty questions you may have.

Please provide as much detailed information as possible. This will minimize the number of e-mail communications between you and D-Link's Network Engineers and enable them to provide you with an accurate and timely response.



## Specifications

Memory Capacity Built-in 32 MB memory

Memory Slot SmartMedia Card slot

LCD Display TN-type, 37x25 (mm)

Signal to Noise Ratio: 90dB

Earphone Output 5 mWx2

Frequency Range 20Hz ~ 20KHz

Battery 2 x AAA

(Alkaline type recommended)

Dimensions 65 x 89 x 17 mm

Weight: 80g (Without batteries)



# D-Link<sup>®</sup> Offices

<b>AUSTRALIA</b>	<b>D-LINK AUSTRALASIA</b> Unit 16, 390 Eastern Valley Way, Roseville, NSW 2069, Australia TEL: 61-2-9417-7100 FAX: 61-2-9417-1077 TOLL FREE: 1800-177-100 (Australia), 0800-900900 (New Zealand) URL: www.dlink.com.au EMAIL: support@dlink.com.au info@dlink.com.au
<b>CANADA</b>	<b>D-LINK CANADA</b> 2180 Winston Park Drive, Oakville, Ontario L6H 5W1 Canada TEL: 1-905-829-5033 FAX: 1-905-829-5095 BBS: 1-905-279-8732 FREE CALL: 1-800-354-6522 URL: www.dlink.ca EMAIL: techsup@dlink.ca
<b>CHILE</b>	<b>D-LINK SOUTH AMERICA</b> Isidora Goyenechea #2934 de 702, Las Condes, Santiago, Chile TEL: 56-2-232-3185 FAX: 56-2-2320923 URL: www.dlink.cl E-MAIL: ccasassu@dlink.cl, tsilva@dlink.cl
<b>CHINA</b>	<b>D-LINK CHINA</b> 2F, Sigma Building, 49 Zhichun Road, Haidian District, 100080 Beijing, China TEL: 86-10-88097777 FAX: 86-10-88096789 URL: www.dlink.com.cn
<b>DENMARK</b>	<b>D-LINK DENMARK</b> Naverland 2, DK-2600 Glostrup, Copenhagen, Denmark TEL: 45-43-969040 FAX: 45-43-424347 URL: www.dlink.dk E-MAIL: info@dlink.dk
<b>EGYPT</b>	<b>D-LINK MIDDLE EAST</b> 7 Assem Ebn Sabet Street, Heliopolis Cairo, Egypt TEL: 202-2456176 FAX: 202-2456192 URL: www.dlink-me.com E-MAIL: support@dlink-me.com fateen@dlink-me.com
<b>FRANCE</b>	<b>D-LINK FRANCE</b> Le Florilege #2, Allee de la Fresnerie 78330 Fontenay Le Fleury France TEL: 33-1-30238688 FAX: 33-1-3023-8689 URL: www.dlink-france.fr E-MAIL: info@dlink-france.fr
<b>GERMANY</b>	<b>D-LINK GERMANY</b> Bachstrae 22, D-65830 Kriftel Germany TEL: 49-(0)6192-97110 FAX: 49-(0)6192-9711-11 URL: www.dlink.de BBS: 49-(0)6192-971199 (Analog) 49-(0)6192-971198 (ISDN) INFO LINE: 00800-7250-0000 (toll free) HELP LINE: 00800-7250-4000 (toll free) REPAIR LINE: 00800-7250-8000 EMAIL: mbischoff@dlink.de, mboerner@dlink.de
<b>INDIA</b>	<b>D-LINK INDIA</b> Plot No.5, Kurla-Bandra Complex Road, Off Cst Road, Santacruz (E), Bombay - 400 098 India TEL: 91-22-652-6696 FAX: 91-22-652-8914 URL: www.dlink-india.com E-MAIL: service@dlink.india.com
<b>ITALY</b>	<b>D-LINK ITALIA</b> Via Nino Bonnet No. 6/b, 20154 Milano, Italy TEL: 39-02-2900-0676 FAX: 39-02-2900-1723 URL: www.dlink.it E-MAIL: info@dlink.it
<b>JAPAN</b>	<b>D-LINK JAPAN</b> 10F, 8-8-15 Nishi-Gotanda, Shinagawa-ku, Tokyo 141 Japan TEL: 81-3-5434-9678 FAX: 81-3-5434-9868 URL: www.dlink.co.jp E-MAIL: kida@d-link.co.jp
<b>RUSSIA</b>	<b>D-LINK RUSSIA</b> Michurinski Prospekt 49, 117607 Moscow, Russia TEL: 7-095-737-3389, 7-095-737-3492 FAX: 7-095-737-3390 E-MAIL: vl@dlink.ru
<b>SINGAPORE</b>	<b>D-LINK INTERNATIONAL</b> 1 International Business Park, #03-12 The Synergy, Singapore 609917 TEL: 65-774-6233 FAX: 65-774-6322 URL: www.dlink-intl.com EMAIL: info@dlink.com.sg
<b>S. AFRICA</b>	<b>D-LINK SOUTH AFRICA</b> Unit 2, Parkside 86 Oak Avenue Highveld Technopark Centurion, Gauteng, Republic of South Africa TEL: 27(0)126652165 FAX: 27(0)126652186 CELL NO: 0826010806 (Bertus Moller) CELL NO: 0826060013 (Attie Pienaar) EMAIL: bertus@d-link.co.za attie@d-link.co.za
<b>SWEDEN</b>	<b>D-LINK SWEDEN</b> P.O. Box 15036, S-167 15 Bromma Sweden TEL: 46-(0)856461900 FAX: 46-(0)8564-61901 EMAIL: info@dlink.se URL: www.dlink.se
<b>TAIWAN</b>	<b>D-LINK TAIWAN</b> 2F, No. 119 Pao-Chung Road, Hsin-Tien, Taipei, Taiwan, R.O.C. TEL: 886-2-2910-2626 FAX: 886-2-2910-1515 URL: www.dlinktw.com.tw E-MAIL: dssqa@tsc.dlinktw.com.tw
<b>U.K.</b>	<b>D-LINK EUROPE</b> 4*Floor, Merit House, Edgware Road, Colindale, London, NW9 5AB, U.K. TEL: 44-20-8731-5555 FAX: 44-20-8731-5511 URL: www.dlink.co.uk E-MAIL: info@dlink.co.uk
<b>U.S.A.</b>	<b>D-LINK U.S.A.</b> 53 Discovery Drive, Irvine, CA 92618 USA TEL: 1-949-788-0805 FAX: 1-949-753-7033 INFO LINE: 1-800-326-1688 BBS: 1-949-455-1779, 1-949-455-9616 URL: www.dlink.com EMAIL: tech@dlink.com, support@dlink.com

# Registration Card

*Print, type or use block letters.*

Your name: Mr./Ms \_\_\_\_\_

Organization: \_\_\_\_\_ Dept. \_\_\_\_\_

Your title at organization: \_\_\_\_\_

Telephone: \_\_\_\_\_ Fax: \_\_\_\_\_

Organization's full address: \_\_\_\_\_

Country: \_\_\_\_\_

Date of purchase (Month/Day/Year): \_\_\_\_\_

Product Model	Product Serial No.	* Product installed in type of computer (e.g., Compaq 486)	* Product installed in computer serial No.

(\* Applies to adapters only)

*Product was purchased from:*

Reseller's name: \_\_\_\_\_

Telephone: \_\_\_\_\_ Fax: \_\_\_\_\_

Reseller's full address: \_\_\_\_\_

**Answers to the following questions help us to support your product:**

**1. Where and how will the product primarily be used?**

Home Office Travel Company Business Home Business Personal Use

**2. How many employees work at installation site?**

1 employee 2-9 10-49 50-99 100-499 500-999 1000 or more

**3. What network protocol(s) does your organization use ?**

XNS/IPX TCP/IP DECnet Others \_\_\_\_\_

**4. What network operating system(s) does your organization use ?**

D-Link LANsmart Novell NetWare NetWare Lite SCO Unix/Xenix PC NFS 3Com 3+Open  
Banyan Vines DECnet Pathwork Windows NT Windows NTAS Windows '95  
Others \_\_\_\_\_

**5. What network management program does your organization use ?**

D-View HP OpenView/Windows HP OpenView/Unix SunNet Manager Novell NMS  
NetView 6000 Others \_\_\_\_\_

**6. What network medium/media does your organization use ?**

Fiber-optics Thick coax Ethernet Thin coax Ethernet 10BASE-T UTP/STP  
100BASE-TX 100BASE-T4 100VGAnyLAN Others \_\_\_\_\_

**7. What applications are used on your network?**

Desktop publishing Spreadsheet Word processing CAD/CAM  
Database management Accounting Others \_\_\_\_\_

**8. What category best describes your company?**

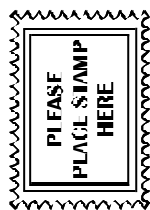
Aerospace Engineering Education Finance Hospital Legal Insurance/Real Estate  
Manufacturing  
Retail/Chainstore/Wholesale Government Transportation/Utilities/Communication VAR  
System house/company Other \_\_\_\_\_

**9. Would you recommend your D-Link product to a friend?**

Yes No Don't know yet

**10. Your comments on this product?**

\_\_\_\_\_



**TO:** \_\_\_\_\_  
\_\_\_\_\_  
\_\_\_\_\_

**D-Link<sup>®</sup>**